

# Between, Nature

## 層層與然

設計者 | 直序設計 / 陳君哲

參與者 | 蔡欣芸

攝影者 | 墨田工作室

空間性質 | 住宅

坐落位置 | 台灣

主要材料 | 大理石、海島型實木地板、實木木皮、馬來漆、鍍鈦金屬、黑鐵、不鏽鋼、強化玻璃、夾砂玻璃、馬鞍皮革

面積 | 100 坪

項目年份 | 2022 年

Designers | Zhí Xù Design / Gino Chen

Participant | Leona Tsai

Photographer | Moooten Studio

Category | Residence

Location | Taiwan

Materials | Marble, solid wood, wood veneer, paint, titanium, stainless steel, glass, leather

Size | 330.5m<sup>2</sup>

Project year | 2022



透過大理石、木皮、皮革等多種材質的層層堆疊，  
打造豐富而不顯複雜的簡約空間。

基地是一棟透天住宅，立於市區巷弄中顯得靜謐而雅致。整體布局根據屋主一家習慣，將各樓層機能規劃的清晰明瞭：1樓是車庫、衣帽間以及接待客人的視聽間；2樓是客廳及餐廚區等公共領域；3樓為主臥室，4、5樓則分別是小女兒及大女兒的寢居空間。由於棟距較小，設計師特別在後方規劃小窗戶，前方則設置大面窗戶，便於引入長向光線提供良好採光；整體以穩重石材搭配溫暖實木皮，在光影映照下展現勻稱視感，營造柔和的居家氛圍。



### 石與木

在2樓客廳，設計師規劃木作格柵天花，透過其整齊線條引導視覺，放大整體空間視野；餐桌上方設置薄膜天花，其透亮效果搭配吊燈光線，均勻柔和的聚焦於餐廳，展現多元光感。藉由不同材質的天花，不僅定義場域間的關係，更豐富了視覺享受。

另外，客廳主要利用仿石材薄磚鋪設地板，增加其耐用度，並在客廳布置地毯，框架住沙發與茶几間的關係，不僅滿足機能需求，亦展現豐富質感；餐廚區則安排木地板，圍塑廚房中島和餐桌兩區域；設計師認為，兩區雖在同個場域，卻可細緻轉換樣式，豐富空間細節。

客廳的電視牆是空間主要亮點，洞石上細微的橫向自然縫，看似密接卻紋路交錯，而一旁設置的不鏽鋼圓柱展示櫃，其通透性搭配石牆，使場域在「虛實」之間取得平衡，形塑既簡約又豐富的場域。而開放式沙發後方，則以木皮收納櫃襯托出現代質感；餐廚區根據屋主需求，設置三個隱藏式冰箱，為弱化高櫃體帶來的壓迫感，特別在頂部與天花板間預留空隙，並在中間規劃矮櫃，不僅展現柔和的層次感，亦滿足備餐、品酒、擺飾等靈活機能。

Gino Chen



直序設計 / 陳君哲

「直」：美是直覺，生活積累產生的完美平衡。

「序」：空間中層次、架構、邏輯、思維所堆疊的場域精神。

設計自空間中最原始的調性著手，運用光線、自然與材質，淬鍊出空間本質；一景一處，生活即為如此。這樣的經驗滿足設計團隊持續前進，為了體驗蒐集每一個生活中的片段。

Zhí Xù Design / Gino Chen

"Straight": beauty is intuition, the perfect balance produced by the accumulation of life. "Preface": the spirit of the field stacked by layers, structures, logic, and thinking in the space. This design started from the most primitive tonality in the space, and uses light, nature, and materials to temper the essence of the space. One scene, one place, life is like this. This kind of experience satisfied the design team to continue to move forward and collect every fragment of life for experience

1. 客廳的木作格柵天花，整齊線條拉長視線擴大視野。2. 電視牆旁設置不鏽鋼圓柱櫃體，讓石牆與通透櫃體，以「實」和「虛」平衡空間。

1. The wooden grille ceiling in the living room; neat lines lengthen the line of sight and expand the view. 2. A stainless steel cylindrical cabinet is set up next to the TV wall. The stone wall and transparent cabinet balance the space with the "real" and "virtual".

### 用材料描繪個人色彩

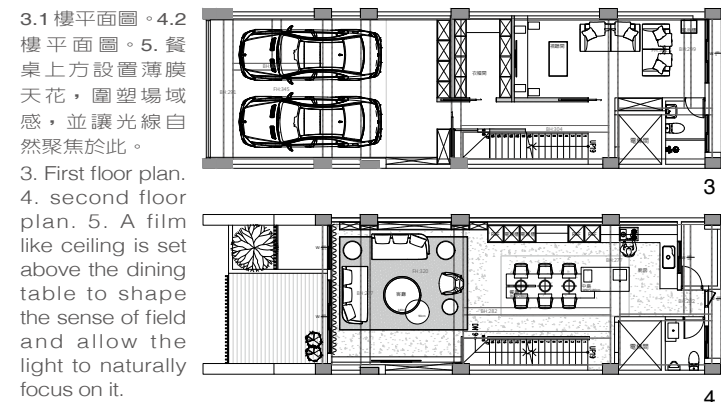
步上3樓廊道，設計師為柔化沉重牆面，特別規劃展示櫃打造舒適端景；視線延伸至主臥，則運用了石材、格柵、木皮等材質，延續2樓語彙作整體搭配，而木作格柵牆與床背烤漆收納櫃，則形成視覺上的明暗對比，設計師將櫃體拉出，用於收納的同時，也包裹結構原有樑柱，並在房內鋪設實木皮地板串聯整合空間，塑造其自然奢華感。

材料運用也別具巧思，穿隔在就寢區與梳妝桌間的石牆，中間的鏤空設計，不僅讓石牆與層架相互連結融合，更令視野有穿透感；另外，在石材的襯托下，將馬鞍皮革、鍍鈦訂製吊燈、層板鐵件等材質和諧融合。當視線穿過玻璃門，是充滿木作風格的更衣室，以木皮和線板作細節裝飾，不僅豐富視覺，更弱化石材帶來的冷硬感，呈現典雅輕柔氛圍。

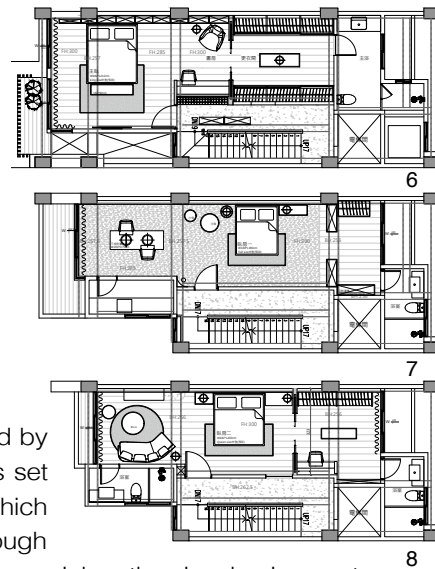
4樓是小女兒房，根據喜好以簡單自然語彙為主軸，規劃木格柵收納櫃，並搭配弧形柚木皮天花，為空間帶來趣味性的不同層次；而門旁則設計立面弧形牆角木柱，柔化生硬角落形塑安穩氛圍。乾淨簡約的這間臥室的代名詞，在牆面嵌燈光影照映下，展現其細膩紋理，猶如一幅天然畫作，為場域增添生動氣息。

5樓則是多彩鮮明的大女兒房，天花以木作格柵及線板造型，界定起居室和就寢區，並在空間中添加淡雅的綠色，連貫兩區域。在空間的細節處，設計師則規劃局部線板裝飾，搭配壁爐造型收納櫃，為場域注入典雅氣息；而在烤漆牆襯托下的奢石，則顯得質樸高雅，豐富空間表情。在空間右邊是更衣室，主要採用鐵件木作、皮革門片和抽屜等材質輕巧融合，展現雅致質感。

全作透過石材、格柵、皮革等異材質的層層堆疊，在簡潔明快中增添奢華高級感，重現細節並優化平面，豐富垂直語彙，滿足屋主一家的喜好與機能需求。採訪|林靖謠



This project is an elegant multi-level residential building located in a quiet alley in the metropolitan area. The overall layout was planned according to the family's activities. The first floor was planned with a car garage, cloakroom, and entertainment room for receiving guests. The second floor is a common living room and dining space. The master bedroom suite is located on the third floor while the 4th and 5th floors host the bedrooms of the two daughters. Due to the close distance between buildings, the designer specially planned small windows at the rear elevation and large openings at front façade to allow daylight into the building. The overall design theme uses the combination of stone and wood finishes showing a symmetrical visual sense of balance under light and shadow creating a pleasant warm home atmosphere.



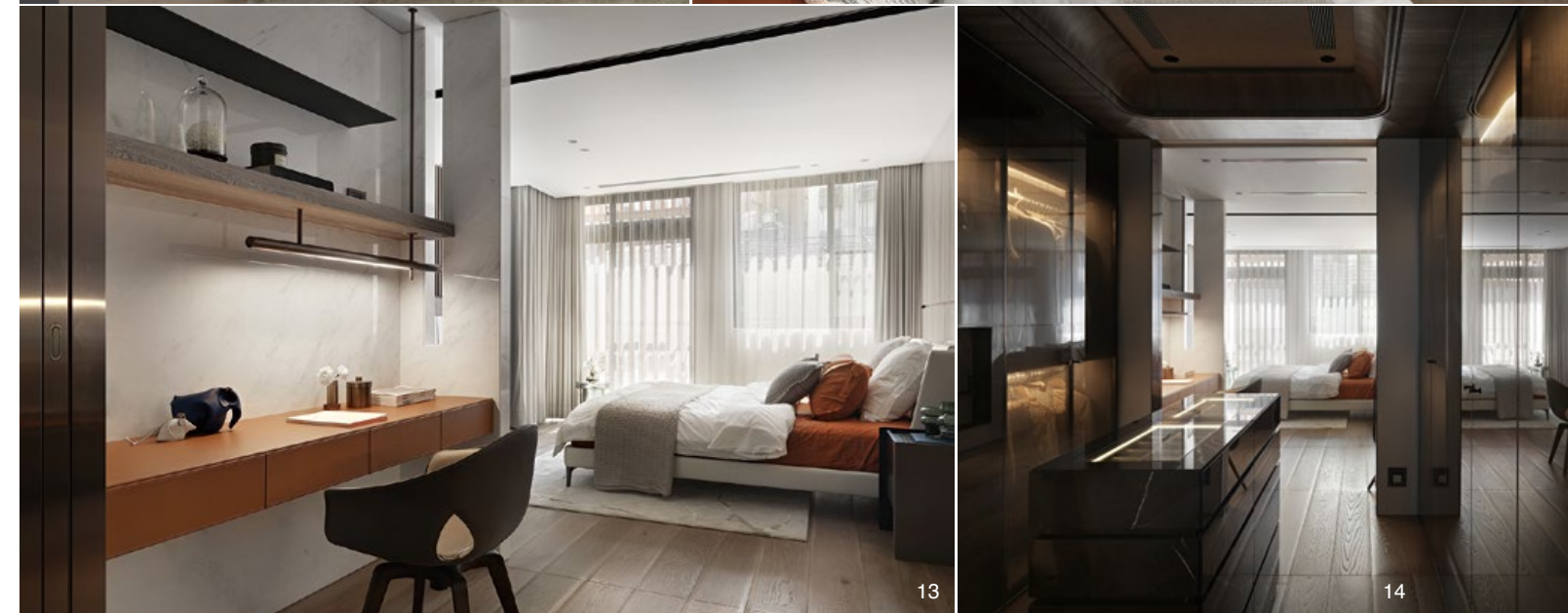
**Stone and wood**

In the living room on the 2nd floor the designer planned the wooden grille ceiling guided by a vision through neat lines and enlarging the overall spatial vision. A film like ceiling is set above the dining table, and its translucent effect is combined with the chandelier lines which evenly and softly focuses on the dining room, showing a sense of multiple lights. Through the ceiling of different materials, it not only defines the relationship between fields, but also enriches the visual enjoyment.

The living room has imitation stone brick flooring to increase its durability and arranged carpets in the living room frame the relationship between the sofa and the coffee table, which not only meets functional needs, but also shows a rich texture; The dining area is arranged with wooden floors, which surround the kitchen island and the dining table. The designer believes that although the two districts are in the same field, they can be carefully transformed to enrich the details of the space.

6.3 樓平面圖。7.4 樓平面圖。8.5 樓平面圖。9. 廚房融合冷硬石材與溫暖木色，在光影下展現和諧沉靜的韻味。10. 為弱化冰箱帶來的壓迫感，在櫃體頂部與天花板預留空隙，並規劃矮櫃，滿足備餐、品酒、擺飾等機能。11. 在3樓廊道設置展示櫃，以黑石材襯托木色櫃體，並置入格柵產生多變光感。12. 分隔梳妝桌與就寢區的石牆，鏤空的設計讓視線貫穿空間，同時與層架作連接。13. 海島型實木地板整合空間，柔化石材帶來的生硬感。14. 主臥更衣室以木皮和線板細節裝飾，營造溫潤柔和氛圍；透明玻璃門讓視線具穿透力，連貫整個場域。

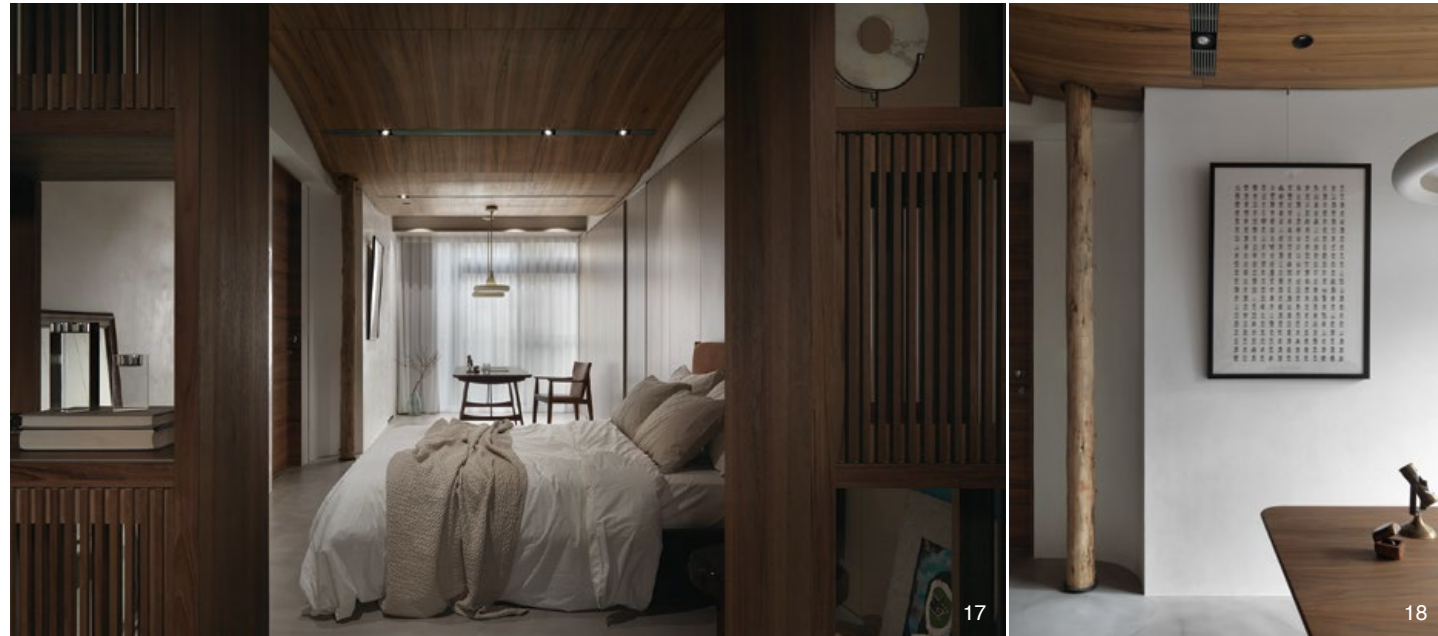
6. Third floor plan. 7. Fourth floor plan. 8. Fifth floor plan. 9. The kitchen combines cold hard stone and warm wood color showing a harmonious and calm charm under the light and shadow. 10. To weaken the sense of oppression brought by the refrigerator, there is gap between the top of the cabinet and the ceiling. A low cabinet meets the functions of meal preparation, wine tasting, decorating, etc. 11. A display cabinet in the corridor on the 3rd floor sets off the wood-colored cabinet with black stone. A grille was inserted to produce a sense of changeable light. 12. The stone wall separates the dressing table from the sleeping area. The openwork design allows the view to penetrate the space and is connected to the shelves. 13. Island-type solid wood floor integrates the space. Soft stone material brings a stiff feeling. 14. The master bedroom dressing room is decorated with veneer and wire board details, creating a warm and soft atmosphere. The transparent glass door allows the sight to penetrate and connect the entire field.



The TV wall in the living room is the main highlight of the space. The subtle horizontal natural seams on the travertine seem to be closely connected but the lines are staggered. The stainless-steel cylindrical display cabinet is set to the side of a stone wall so that the field balances between "virtual and real", shaping a simple and rich field. Behind the open sofa, a wooden veneer storage cabinet is positioned to set off a modern texture. According to the needs of the owner the kitchen area is equipped with three hidden refrigerators to weaken the oppression brought by the high cabinet particularly the gap between the top and the ceiling, A low cabinet is planned in the middle which not only shows a soft sense of layering but also fulfills flexible functions such as meal preparation, wine tasting, and decoration.

**Depicting personal colors with materials**

Walking down the corridor on the 3rd floor the designer specially planned the display cabinet to create a comfortable end scene to soften the heavy wall. The line of sight extends to the master bedroom, using stone, a grille, veneer, and other materials, continuing the language of the 2nd floor, while the wooden grille wall and the painted storage cabinet, forming a visual contrast between light and dark. The designer pulled out the cabinet for storage but also wrapped the original beams and columns of the structure. A solid wood veneer floor in the room integrates the shaping its natural sense of luxury. The use of materials is ingenious. The stone wall between the sleeping area, the dressing table, and the hollow design in the middle not only connects and integrates the stone wall and the shelf which makes the vision penetrating. In the background of stone, saddle leather, titanium-plated custom chandelier, laminate iron, and other materials are harmoniously integrated. When the eye passes through the glass door one sees a dressing room full of woodwork style decorated with wood veneer and wire panels which not only enriches the vision, but also weakens the cold and hard feeling brought by fossil materials presenting an elegant and gentle atmosphere.



The 4th floor is the youngest daughter's room. It is based on a simple natural vocabulary according to preferences, The wooden grilles, storage cabinets, and matching curved teak veneer ceilings bring interesting high and low levels to the space; Next to the door, the façade is designed with curved corners covered with wooden columns softening the hard corners and creating a stable atmosphere. Clean simplicity is synonymous with this bedroom, and its delicate texture is reflected by the lighting on the wall. Like a natural painting it adds a vivid touch to the site.

On the fifth floor is the colorful granddaughter's room with a wooden grille and wiring panel on the ceiling that defines the living room and sleeping area. A light green color in the space connecting the two areas. In the details of the space the designer planned the decoration of local wiring panels which along with fireplace-shaped storage cabinets injects an elegant atmosphere into the room. The luxurious stone against the background of the lacquered wall is simple and elegant enriching the spatial expression. On the right side of the space is the dressing room which is mainly clad in iron and wood, leather door pieces and drawers, and other materials that are lightly integrated to convey an elegant texture.

Through the stacking of stone, grilles, leather and other different materials, the whole work adds a sense of luxury to simplicity and brightness. Reproduced details optimize the planes, enrich the vertical vocabulary, and meet the preferences and functional needs of the owner's family.

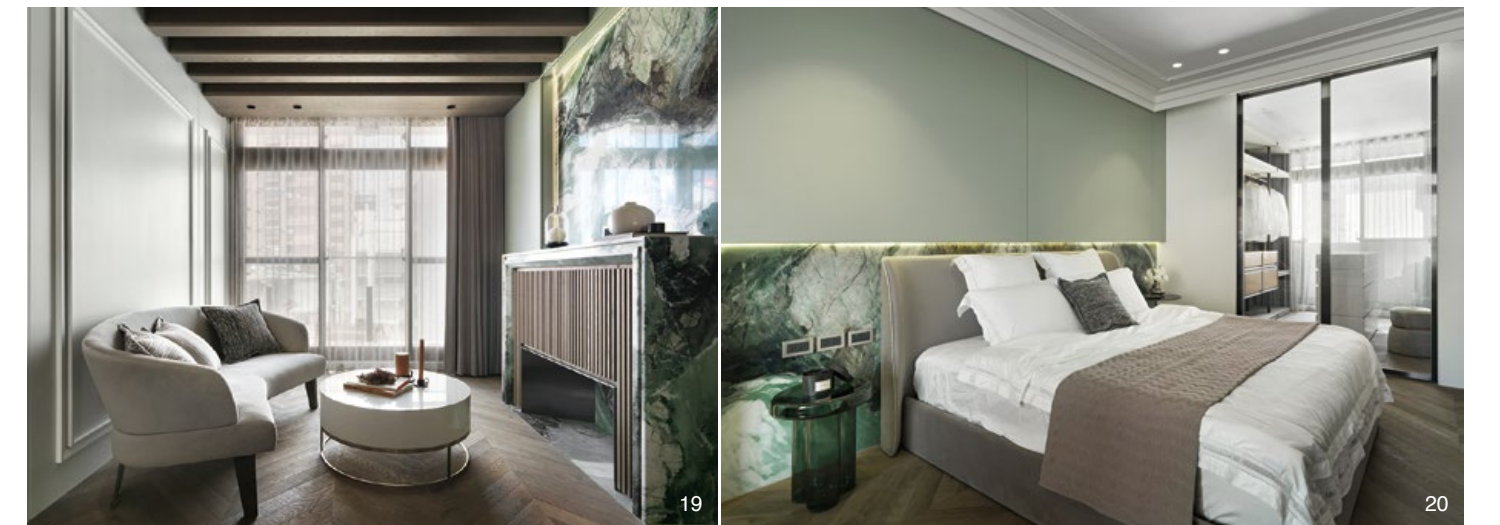
## 建材分析 Material Analysis

1. 以石材的「重」塑造空間穩定感，實木皮則為場域注入溫暖氣息。2. 客廳利用仿石拋磚增加其耐用度，提供長期的機能享受。3. 主臥木作格柵搭配鍍鈦烤漆玻璃，展現視覺上的對比。

1. The "heaviness" of stone creates a sense of stability in the space while the wood veneer finish injects warmth into the space. 2. The living room uses imitation stone flooring bricks to increase its durability and provide long-term functional enjoyment. 3. The wooden grille of the master bedroom is matched with titanium-coated baked varnish glass creating visual contrast.

15. 設置柚木皮弧形天花柔化視覺，同時高低的層次感為空間增添趣味性。16. 在牆面嵌燈照映下顯其自然紋理，呈現輕巧溫潤的休憩場所。17. 小女兒房以木格柵搭配弧形天花，營造自然簡約的空間氛圍。18. 規劃弧形牆溫柔包裹木柱，柔化生硬牆角塑造安穩感。19. 大女兒房起居室規劃線板及壁爐造型的收納櫃，打造多彩溫暖的小天地。20. 奢石在烤漆牆面的襯托下，展現典雅別致的韻味。21. 更衣室利用鐵件木作、皮革門片、抽屜等簡單的異材質輕巧堆疊，呈現高雅質感。

15. The teak veneer curved ceiling softens the vision while the sense of hierarchy adds interest to the space. 16. Its natural texture is displayed under the light of the wall lamp presenting a light and warm resting place. 17. The little daughter's room uses wooden grilles with an arcing teak ceiling to create a natural and simple spatial atmosphere. 18. The curved wall gently covers the wooden pillars softens the corners of the hard wall to create a sense of stability. 19. The living room of the eldest daughter's room is planned with wiring panels and fireplace-shaped storage cabinets to create a colorful and warm small world. 20. Luxurious stone displays an elegant and chic charm under the background of the painted wall. 21. The dressing room is lightly stacked with simple exotic materials such as iron and wood, leather door pieces, drawers, etc. to present an elegant texture.



## 溝通重點 Communication Note

1. 運用異材質的堆疊規劃主次空間，視覺豐富而不顯複雜。2. 根據家庭成員喜好，打造具個人色彩的獨特場域。

1. Use stacking of different materials to plan the primary and secondary spaces is visually rich but not complicated. 2. According to the preferences of family members, create unique fields with personalized character.